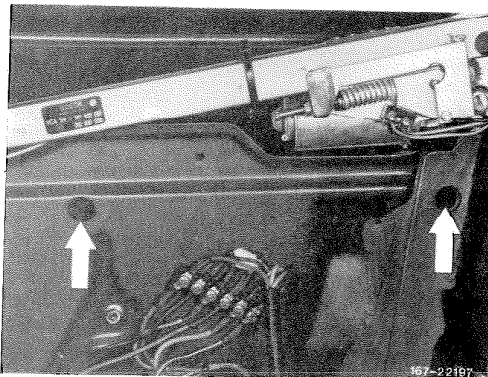


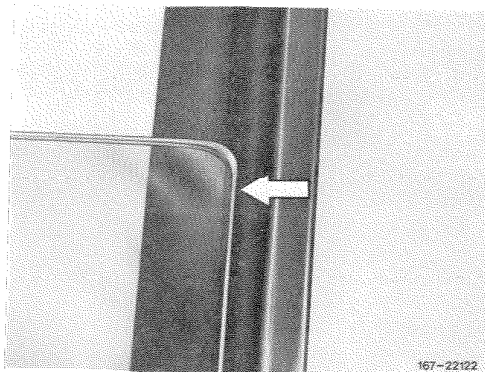
67-420 Adjusting rear side glass

Adjustment

- 1 Remove rear side wall lining (68-456).
- 2 Check adjustment of crank window on driver's door and adjust, if required (72-195, section B).
- 3 Open window until screws of window opener rail show up at assembly holes.
- 4 Loosen screws on window opener rail.

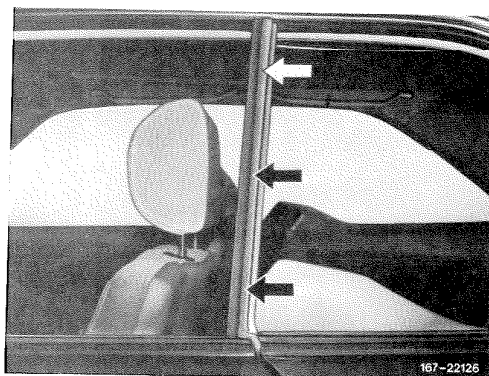


- 5 Adjust side window in longitudinal direction in such a manner that with the windows closed, the glass of the driver's door rests in center of groove for sealing strip.



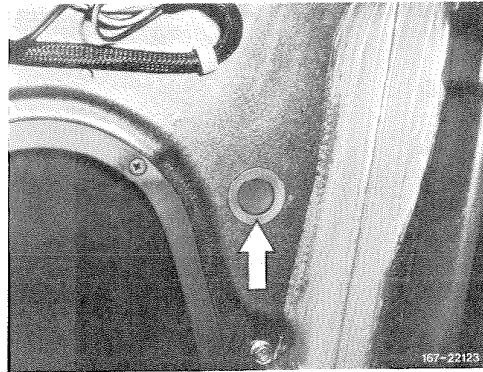
- 6 Adjust front edge of rear side window in such a manner that edge runs in parallel with rear edge of crank window of driver's door.

- 7 Tighten screws on window opening rail.

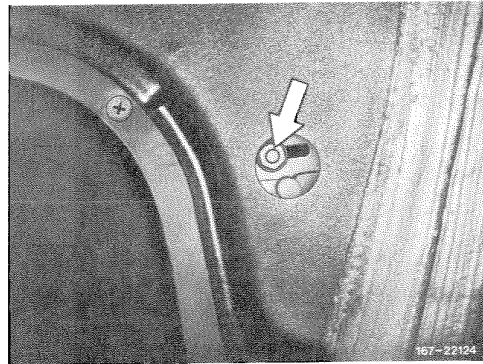


67-420 Adjusting rear side glass

8 Remove rubber plug of assembly hole for upper stop bolt.

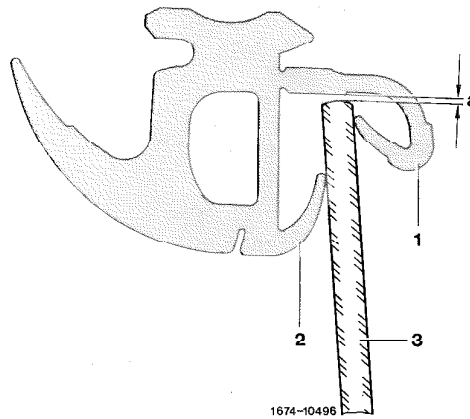


9 Loosen nut on upper stop bolt.



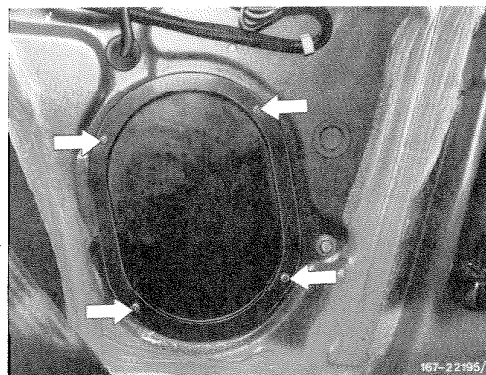
10 Adjust height of side window in such a manner that with the window closed, an air gap 1–2 mm wide shows up between upper edge of glass and ceiling strip.

11 Tighten nut at upper stop bolt.



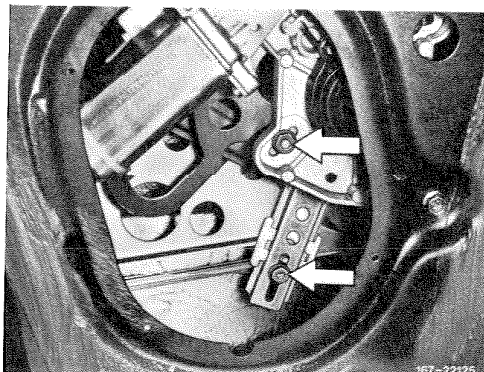
1 = outer sealing lip
2 = inner sealing lip
3 = glass
a = 1–2 mm

12 Unscrew cover on assembly hole.

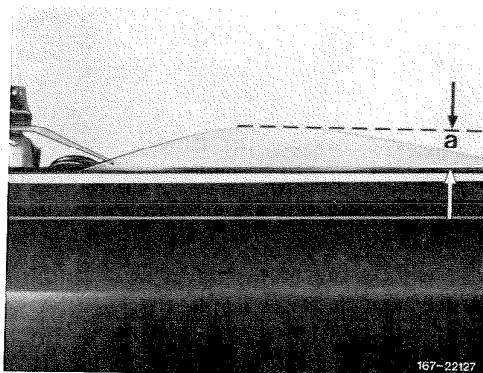


67-420 Adjusting rear side glass

13 Loosen nuts on upper stop bolt.



14 Adjust rear side window in such a manner that with window opened the glass projects for approx. 30 mm from rubber lip of sealing bar. Simultaneous check whether sealing bar is not resting against driver's door between rear side window and crank window.



a - approx. 30

15 Tighten nuts at lower stop bolt.

16 Close assembly holes at rear side wall.

17 Install rear side wall lining (68-456).